

'FP-HEWL' Line Heaters

The EXHEAT 'FP-HEWL' range of flameproof line heaters is suitable for heating all process fluids which are non-corrosive to the materials of construction. They provide a safe electrical heating method, for bulk liquid flow applications. A robust Ex'd' terminal enclosure protects the electrical connections.

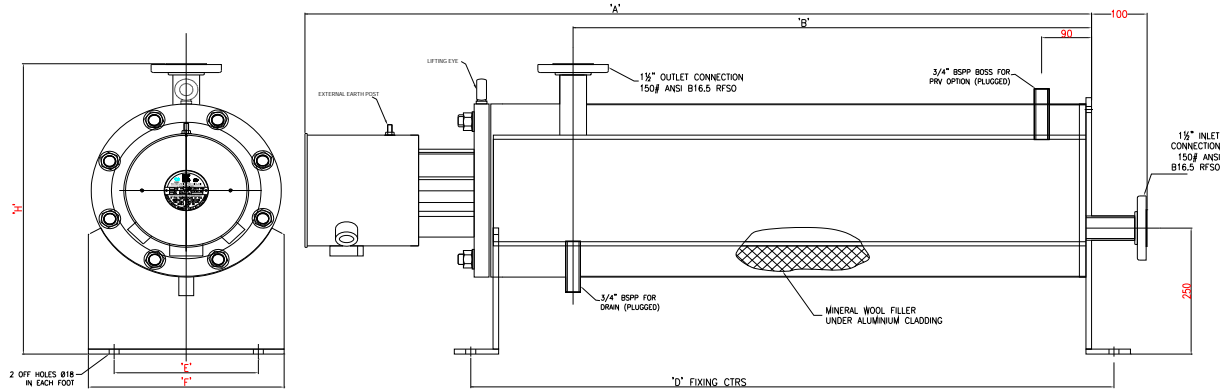


FEATURES

- Thermal insulation and cladding.
- Flameproof and Weatherproof terminal enclosure with protection to IP67.
- Individually replaceable Incoloy 825 sheathed elements.
- Working pressure up to 73 psi g (5 bar.g).
- Working temperature to 100 °C.
- Internal control thermostats and over-temperature thermostat.
- Also available in "Flameproof" construction for hazardous areas.
- Alternative materials of construction available.
- Designed for horizontal installation only. Vertical mounting version available on request.

TYPICAL APPLICATIONS

- Industrial washing and rinsing processes.
- Indirect heating of liquids
- Engine jacket pre-heating
- Temperature maintenance of storage tanks
- Under floor heating schemes



MODEL No	LOADING (kW)	DIMENSIONS							
		A	B	C	D	E	F	G	H
FP-HEWL 15	15	1395	1040	50	1265	220	290	40	526
FP-HEWL 18	18	1395	1040	50	1265	220	290	40	526
FP-HEWL 24	24	1705	1350	50	1575	220	290	40	526
FP-HEWL 30	30	1705	1350	50	1575	220	290	40	526
FP-HEWL 45	45	1795	1435	74	1660	260	353	40	575
FP-HEWL 60	60	1795	1435	74	1660	260	353	40	575
FP-HEWL 75	75	1795	1435	100	1660	300	416	40	628
FP-HEWL 90	90	1795	1435	100	1660	300	416	40	628
FP-HEWL 105	105	1795	1435	100	1660	300	416	40	628
FP-HEWL 120	120	1795	1435	100	1660	300	416	40	628

- Certification** ATEX II 2 G/D ATEX or IECEx Certified Ex'd' IIC T1 to T6 Ex tD A21 IP66 T... °C EN/IEC 60079-0, EN/IEC 60079-1, EN/IEC 61241-0 + EN/IEC 61241-1
- Enclosure** Weatherproof protection to IP65. Mild Steel or 316 Stainless Steel, external and internal earth, screwed terminal cover, finished in epoxy paint (If required)
- Element** Incoloy 825 or Stainless Steel sheathed rod type.
- Pressure** Working Pressure up to 5 bar.g (73 psi g).
- Design Code** Sound Engineering Practice. (SEP)
- Rating** The above kW ratings are a guide for each vessel size, however the rating can be unlimited within the design parameters and ATEX approval.
- Controls** Heater over temperature protection is fitted as standard. Optional process temperature sensing devices can be incorporated in the form of thermostats, RTD's or thermocouples.
- Voltage** Standard supplies up to 690v.