

'FWDT' Flameproof Air Warmers

The EXHEAT 'FWDT' range of Air Warmers has been designed for heating small work or storage areas and similar applications, located in Zone 1 or 2 Hazardous Areas, where the flammable atmosphere is a IIC group.

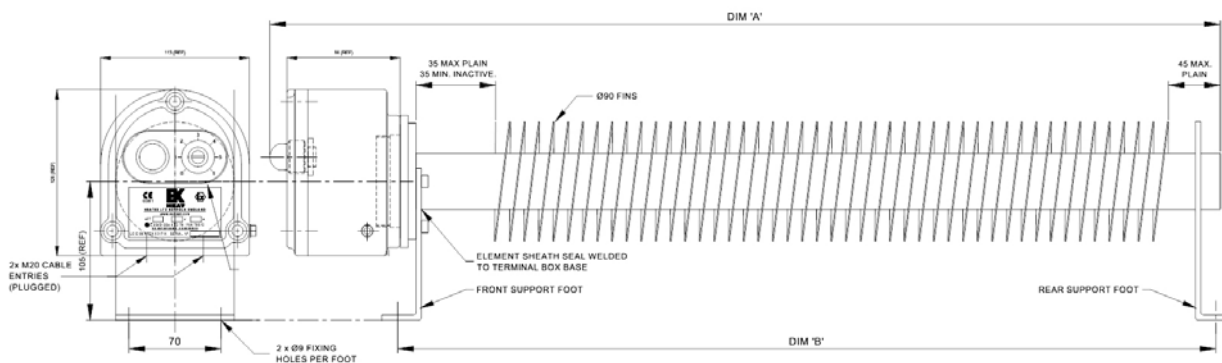


FEATURES

- Certified to meet the ATEX directive 94/9/EC. For IECEx certified heaters contact sales@exheat.com
- Weatherproof to IP66/67
- Suitable for 110v or 230/254v supplies
- Temperature classifications T2, T3 and T4 available
- Suitable for floor or wall mounting
- 2 x 20mm (plugged) cable entries provided as standard
- Rotating terminal box
- Externally Adjustable 0-40 °C room temperature controlled thermostat
- Suitable for ambient temperatures from 20 °C to +60 °C.
- Individually replaceable heating elements.

TYPICAL APPLICATIONS

- Aircraft Hanger Service Bays
- Fuel servicing areas
- Chemical Plants
- Offshore Installations
- Battery Stores
- Gas Installations
- Containers
- Crane Cabs, etc.



Model	'T' Class	Rating Watts	Dimensions		Weight (kg)
			'A'	'B'	
FWDT-500-T3	3	500	800	670	9
FWDT-1000-T3	3	1000	1300	1170	12
FWDT-1500-T3	3	1500	1900	1770	17
FWDT-2000-T3 (230V)	3	2000	2450	2320	20
FWDT-500-T4	4	500	1300	1170	12
FWDT-750-T4	4	750	1900	1770	17
FWDT-1000-T4	4	1000	2450	2320	20

- Rating** Standard mild steel heater ratings and sizes are shown below, stainless steel and other ratings to suit client individual requirements can be provided upon request.
- Certification** ATEX certified II 2 G/D
ATEX & IECEx Certified Ex'd' IIC T2 to T4 Ex tD A21 IP66 T300 °C-T135 °C
EN/IEC60079-0, EN/IEC60079-1, EN/IEC61241-0 + EN/IEC61241-1
- Enclosure** Cast Aluminium
- Tube/Bracket** Powder coated Mild Steel finish
- Controls** Externally Adjustable 0-40 °C room temperature controlled thermostat
- Mounting** Pre-drilled support feet supplied as standard.