

'USW' Storage Water Heaters

The EXHEAT 'USW' range of high volume storage water heater is designed for use on un-vented hot water systems where the cold water make-up comes from the mains water supply. The wide choice of capacities and immersion heater loadings allow the heater to be closely matched to the required duty. They are ideal for providing hot water at a balanced pressure for installations using large volumes.

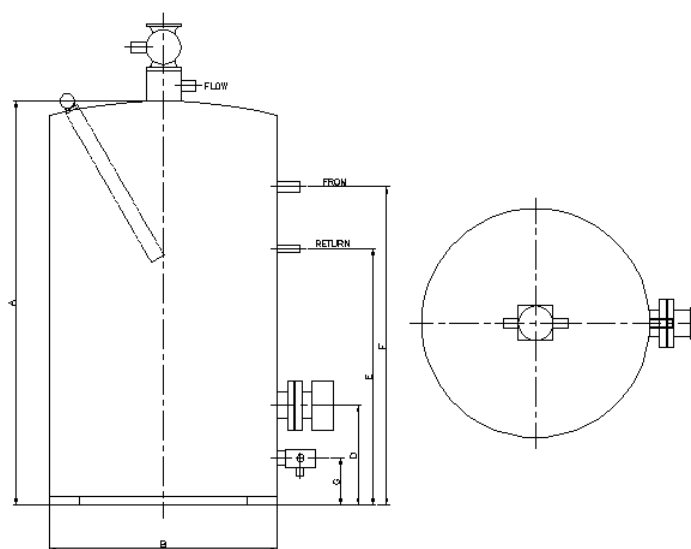
FEATURES

- Capacities from 300 litres to 1000 litres.
- Glass lined steel cylinder with sacrificial anode for maximum corrosion protection.
- Wide range of electrical loadings.
- Supplied with unvented connection kit.
- CFC free polyurethane foam insulation with brushed Stainless Steel finish.
- Front access electrical and plumbing connections.
- 10 bar maximum working pressure.
- Available in Ex'd' construction for Hazardous Areas.



TYPICAL APPLICATIONS

- Leisure / Sports clubs
- Hotels
- Hospitals
- Restaurants
- Nursing Homes



List No	A (mm)	B (mm)	C (mm)	D (mm)	E (mm)	F (mm)	Inlet B.S.P	Return B.S.P	Flow B.S.P	Drain B.S.P
USW 300	1325	750	70	328	842	1044	1"	3/4"	1"	3/4"
USW 400	1662	750	70	330	1014	1362	1"	3/4"	1"	3/4"
USW 500	2000	750	70	330	1348	1700	1"	3/4"	1"	3/4"
USW 600	1807	930	85	413	1254	1477	1 1/2"	3/4"	1 1/2"	3/4"
USW 750	2002	930	85	413	1374	1672	1 1/2"	3/4"	1 1/2"	3/4"
USW 1000	1972	1100	85	447	1351	1602	1 1/2"	3/4"	1 1/2"	3/4"

Enclosure Weatherproof protection to IP55.

Elements Incoloy 800 sheathed, rod type.

Working Pressure 10 bar (max).

Working Temp 90°C max.

Vessel Glass Lined Steel.

Insulation CFC Free Polyurethane Foam.

Cladding Brushed Stainless Steel Effect.

Voltage Standard supplies up to 690v.