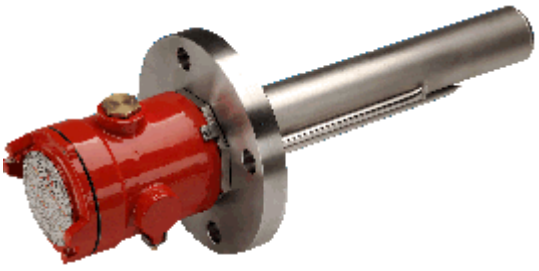


ILLUSTRATION



NOTES

1. RATING & SUPPLY:
2. PROCESS FIXING:
3. ENCLOSURE: RFA-C (CAST ALUMINIUM) (IP67) II 2G EExd IIC T4 ZONE 1 TO EN50014 & EN50018 CERTIFICATE No. LCIE 99 ATEX 6011X.
4. ELEMENT: 1 x WITHDRAWABLE CERAMIC CORE TYPE
5. CONTROLS :
S1 = 1 x
S2 = 1 x
6. HEATER MUST HAVE A MINIMUM OF 1 OFF EITHER OVER TEMPERATURE THERMOSTAT OR CUT-OUT WHICH MUST BE MANUALLY RESET BY EITHER:
a) DEVICE BEING AUTO-RESET, MANUALLY RESET AT THE CONTROL PANEL BY KEY SWITCH OR SPECIAL TOOL.
b) DEVICE BEING MANUAL RESET INSIDE TERMINAL BOX.
7. INSPECTION & TESTING: ELECTRICAL: WI/09/114, HYDROSTATIC: WI/09/110
8. CABLE ENTRIES (SUPPLIED PLUGGED):
1x M25 x1.5p (POWER), 1x M20 x1.5p (CONTROL).
9. FINISH:
TERMINAL BOX: HEATEX SPEC. 3003.01.61, APP. 'A', SYSTEM: 7, COLOUR: RED (RAL 3002). REMAINDER : NATURAL.
10. SEE WIRING DIAGRAM :

1	FIRST ISSUE	19/03/04	MJP				
REV.	COMMENTS	DATE	DRWN	CHKD	APPR		



SCALE	NOT TO SCALE
3rd ANGLE PROJECTION	
TOLERANCES UNLESS OTHERWISE STATED	
0	: 1.5mm
0.0	: 0.5mm
0.00	: 0.25mm
0.000	: 0.1mm
ANGULAR	: 2'

ALL DIMENSIONS IN MILLIMETRES UNLESS OTHERWISE STATED
DO NOT SCALE!
IF IN DOUBT, ASK!

TITLE RFA-C SERIES STAND-OFF FLANGED CORE TYPE FLAMEPROOF IMMERSION HEATER GENERAL ARRANGEMENT		
STOCK CODE No.		
HEATEX DRAWING No.		
SHEET No.	06 of 06	REV 01
PRODUCT: RFA-C SERIES SINGLE CORE TYPE IMMERSION HEATER		