

## BFP Range of Hazardous Area Ex d Certified Immersion Heaters

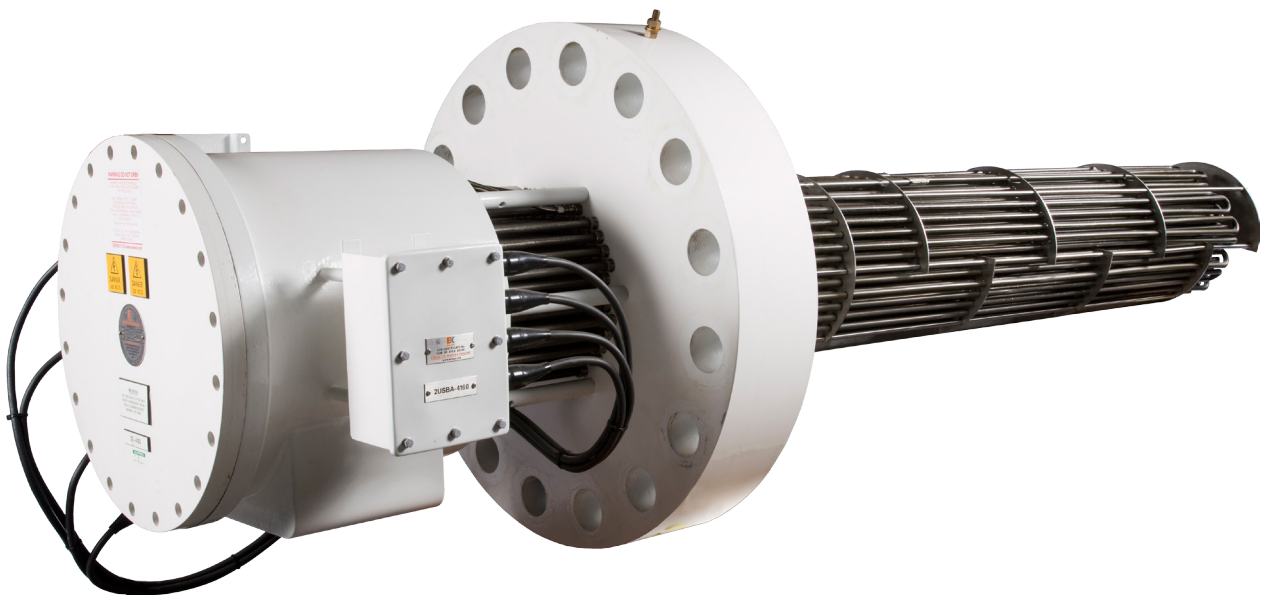
The BFP electric heater comprises a large range of process immersion heaters, certified for use in hazardous areas and are custom built to meet client specifications.

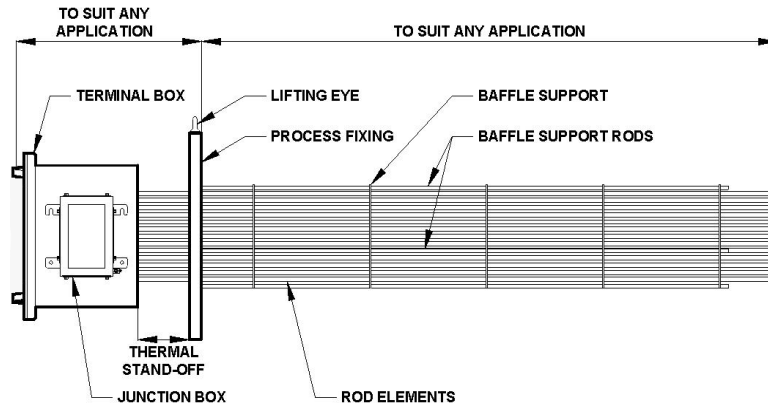
### FEATURES

- Certified to ATEX or IECEx standards
- Terminal box is certified weatherproof to IP65 as well as Type 4 standards
- Temperature classifications T1 to T6
- Up to 1400kW
- Elements are specially sealed to prevent moisture ingress
- Elements are individually replaceable on site without the need for special tools
- Withdrawable type elements are available to facilitate replacement without draining the vessel
- Suitable and certified for use in high ambient temperatures (e.g. Middle East)
- Anti-condensation heaters fitted, if required

### TYPICAL APPLICATIONS

- Crude oil / hydrocarbon liquids
- Molecular sieve regeneration
- Glycol (TEG & MEG) reboilers
- Heat transfer oils
- Industrial gases
- Tank heating
- Natural gas
- Heating medium
- Fuel gas
- Water
- Fuel oils





Nominal Flange Size		kW LOAD with Maximum Immersed Length of 3665 mm		
Inch	mm	1 w/sq cm	2.5 w/sq	7.44 w/sq cm
6	150	30	80	200
8	200	60	160	400
10	250	100	260	650
12	300	150	380	950
14	350	180	460	1150
16	400	245	620	1550
18	450	325	800	2000
20	500	400	980	2500
24	600	585	1460	3650
30	750	1110	2780	5000
36	900	1610	4040	n/a
40	1000	1995	5000	n/a

**Certification** ATEX / IECEx II 2 G/D  
 Ex d IIB T1 to T6 Gb  
 Ex tD A21 T85 to T450°C Db IP65  
 EN 60079-0, EN 60079-1, EN 60079-7, EN 60079-31

**Terminal Box** Manufactured from low temperature carbon steel or stainless steel throughout, with flanged lid

**Elements** Manufactured from 80/20 NiCr resistance wire with high purity compacted magnesium oxide powder sheathed within corrosion / erosion resistant tube, eg:

- Incoloy 800/825
- Inconel 600/625
- Titanium
- 316/316L stainless steel
- 321 stainless steel
- Monel

**Internals** Elements are supported in a baffle type support assembly to prevent vibration and element deformation

**Voltage** Suitable for voltages up to 690V